

Days of air frost

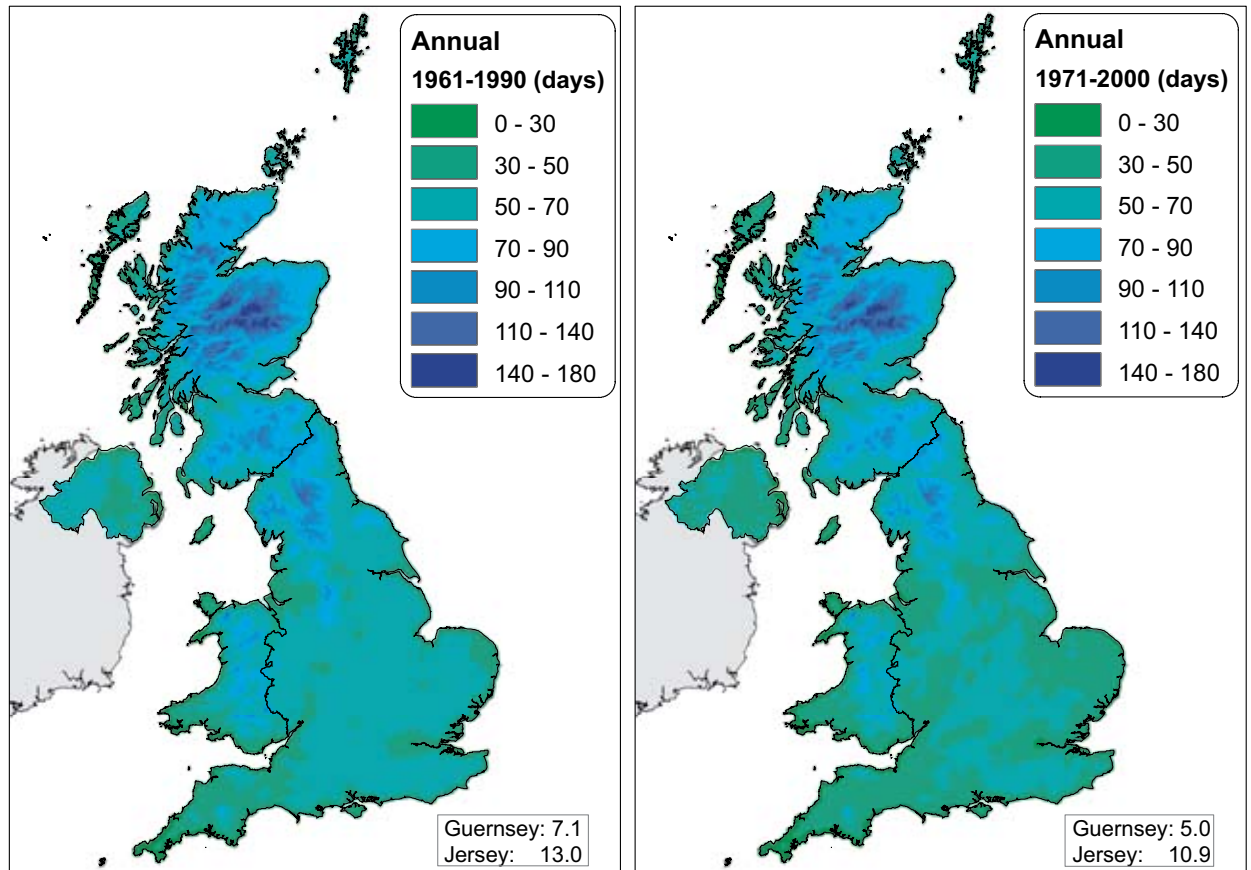


Figure 2.30: Annual average days of air frost for a) 1961-1990, b) 1971-2000

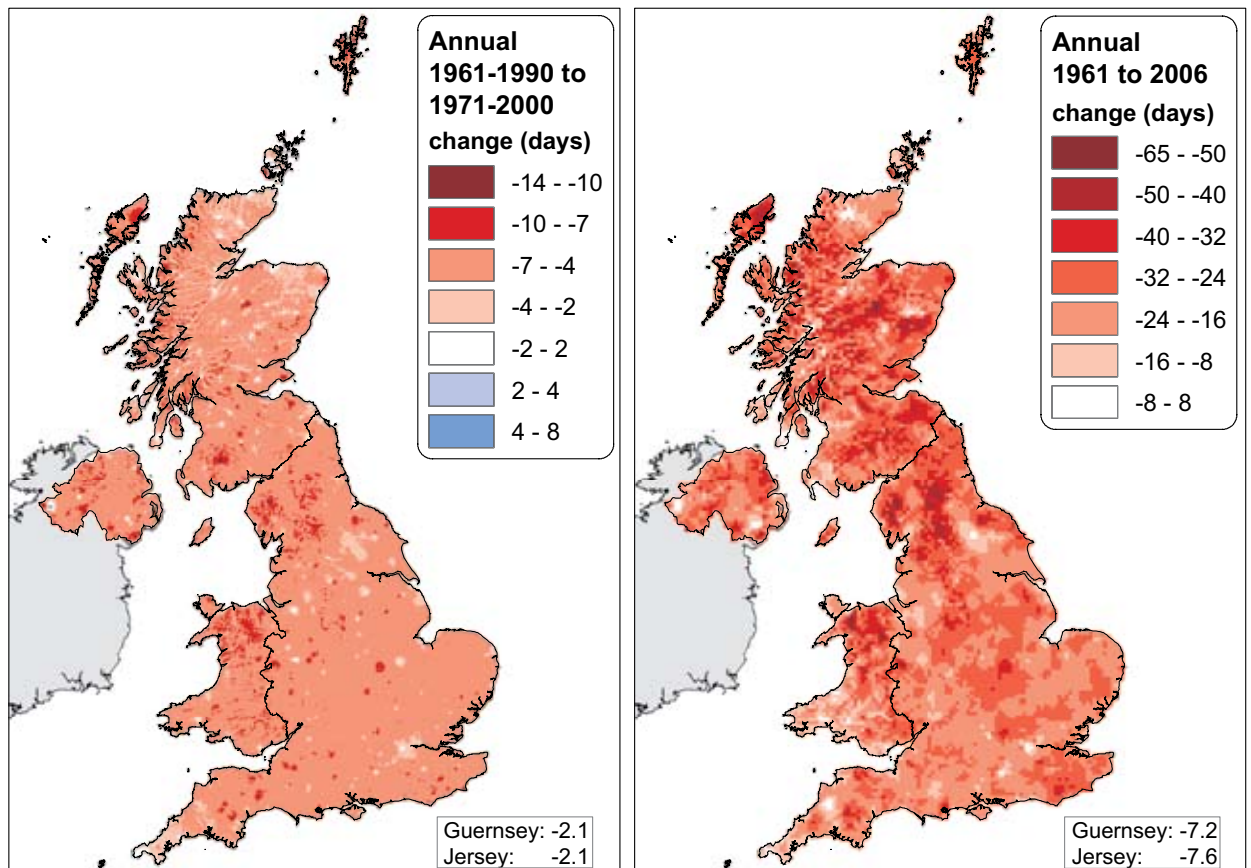


Figure 2.31: Change in annual days of air frost; a) between 1961-1990 and 1971-2000, b) between 1961 and 2006 based on a linear trend

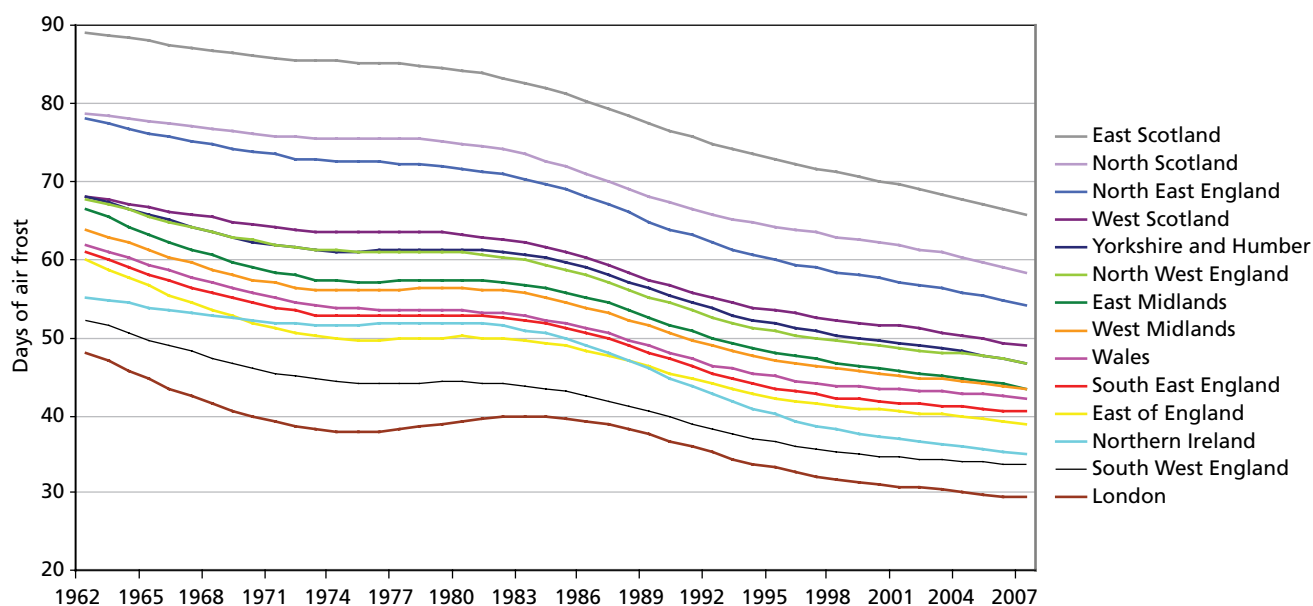


Figure 2.32: Filtered annual days of air frost by area, 1961/62 – 2006/07

Area	Spring	Summer	Autumn	Winter	Annual
South West England	-5.1	-0.04	-1.7	-12.9	-20.9
South East England	-5.1	-0.1	-2.1	-14.8	-23.4
London	-3.6	-0.1	-0.5	-13.5	-18.7
Wales	-6.0	-0.2	-2.0	-12.6	-22.4
East of England	-4.0	-0.1	-2.3	-14.7	-22.6
West Midlands	-5.7	-0.1	-2.2	-13.4	-23.2
East Midlands	-5.2	-0.1	-3.1	-15.0	-25.3
Northern Ireland	-5.9	-0.1	-3.7	-13.6	-24.8
Yorkshire and Humberside	-4.3	-0.1	-3.3	-14.2	-24.1
North West England	-5.9	-0.1	-3.2	-13.1	-24.4
North East England	-5.3	-0.2	-5.0	-15.2	-28.2
West Scotland	-4.8	-0.1	-4.1	-11.7	-22.8
East Scotland	-6.5	-0.2	-5.5	-12.9	-27.6
North Scotland	-6.4	-0.1	-4.9	-11.5	-24.6

Table 2.8: Change in days of air frost from 1961-2006 by season and area, based on a linear trend (bold type indicates significance of the trend at the 95% level)

Heating Degree Days (See Annex 2 for a definition)

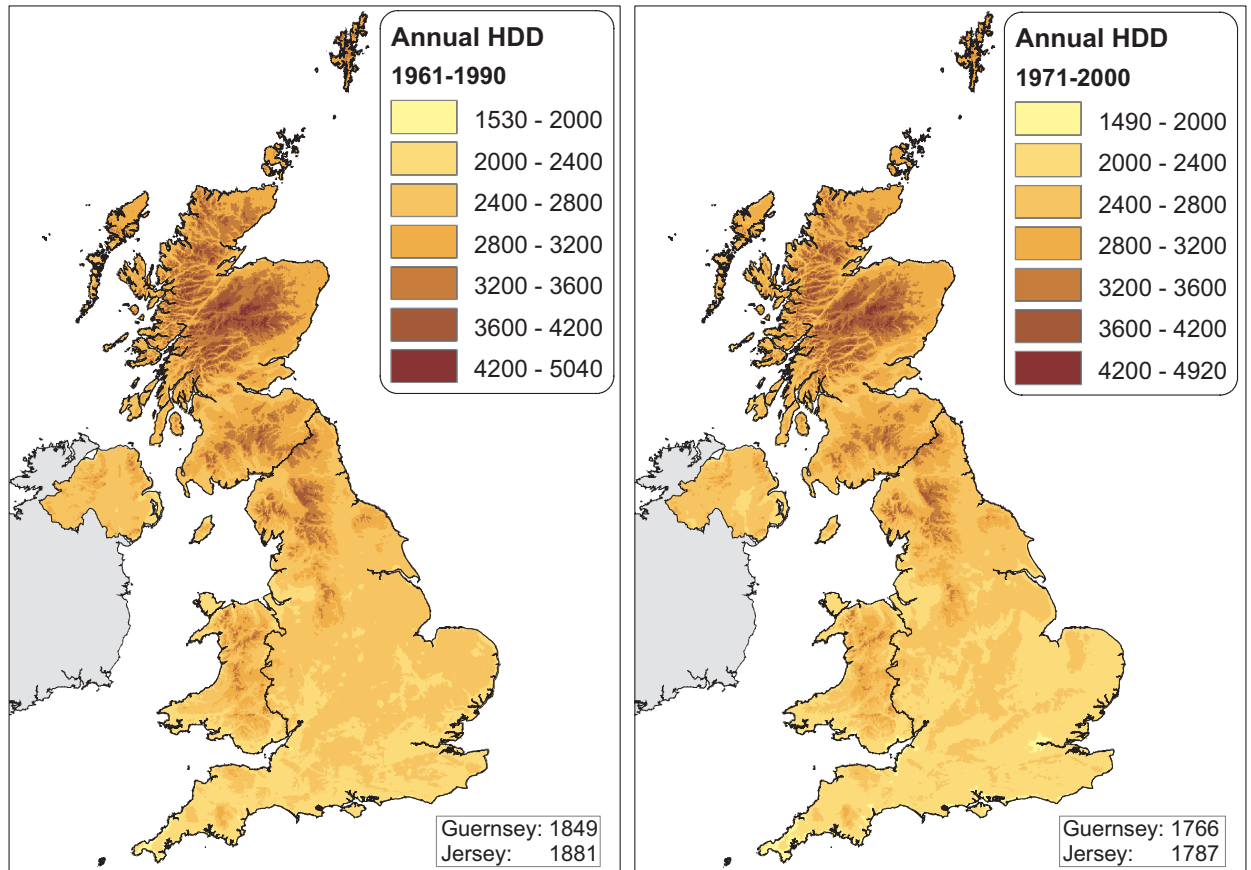


Figure 2.33: Average annual heating degree days (HDD) for a) 1961-1990, b) 1971-2000

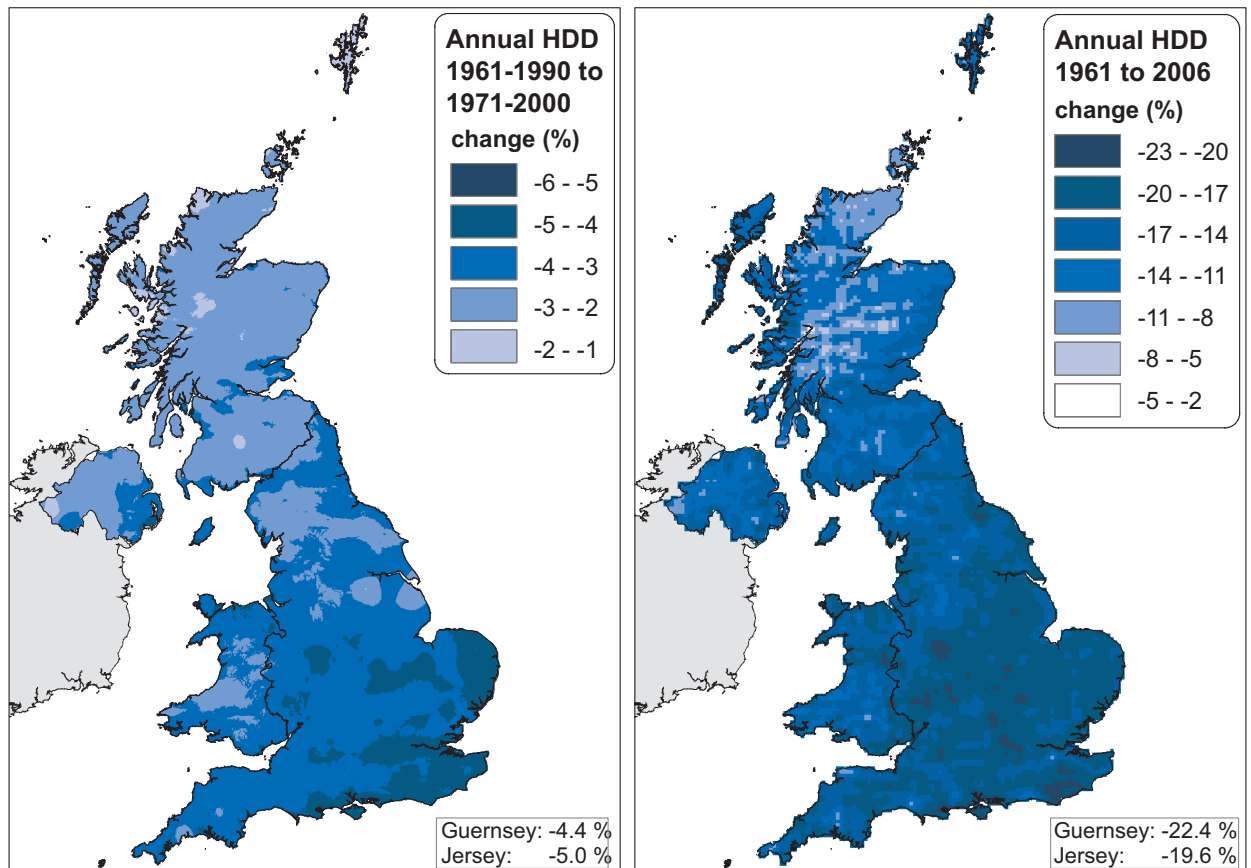


Figure 2.34: Percentage change in annual heating degree days (HDD) a) between 1961-1990 and 1971-2000; b) from 1961 to 2006 based on a linear trend

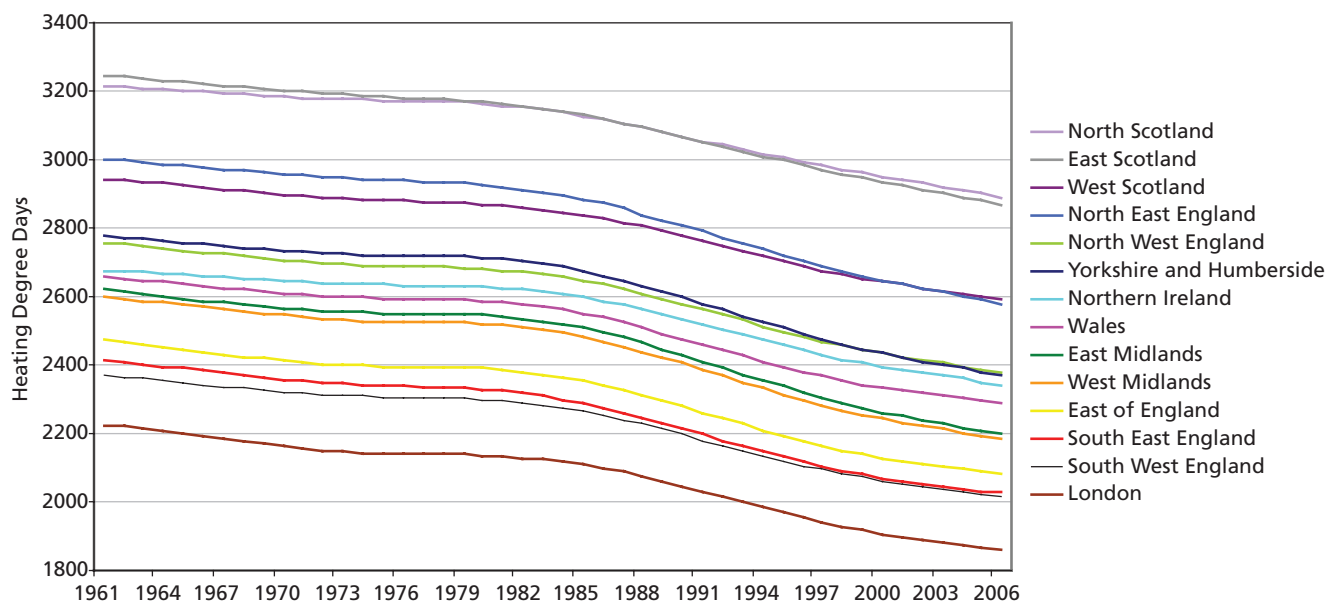


Figure 2.35: Filtered annual heating degree days by area, 1961–2006. See Annex 2 for a definition of HDD.

Cooling Degree Days (See Annex 2 for a definition)

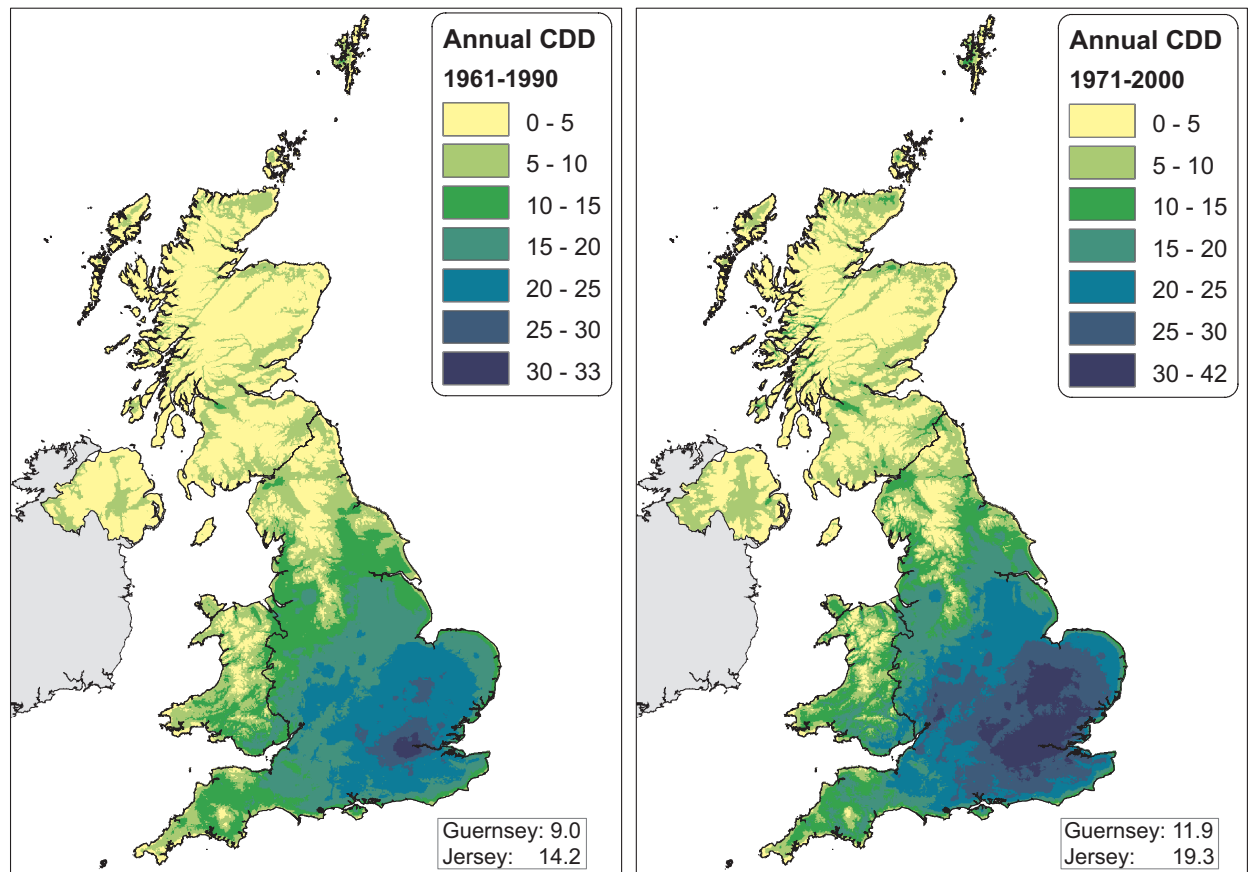


Figure 2.36: Average annual cooling degree days (CDD) for a) 1961-1990, b) 1971-2000

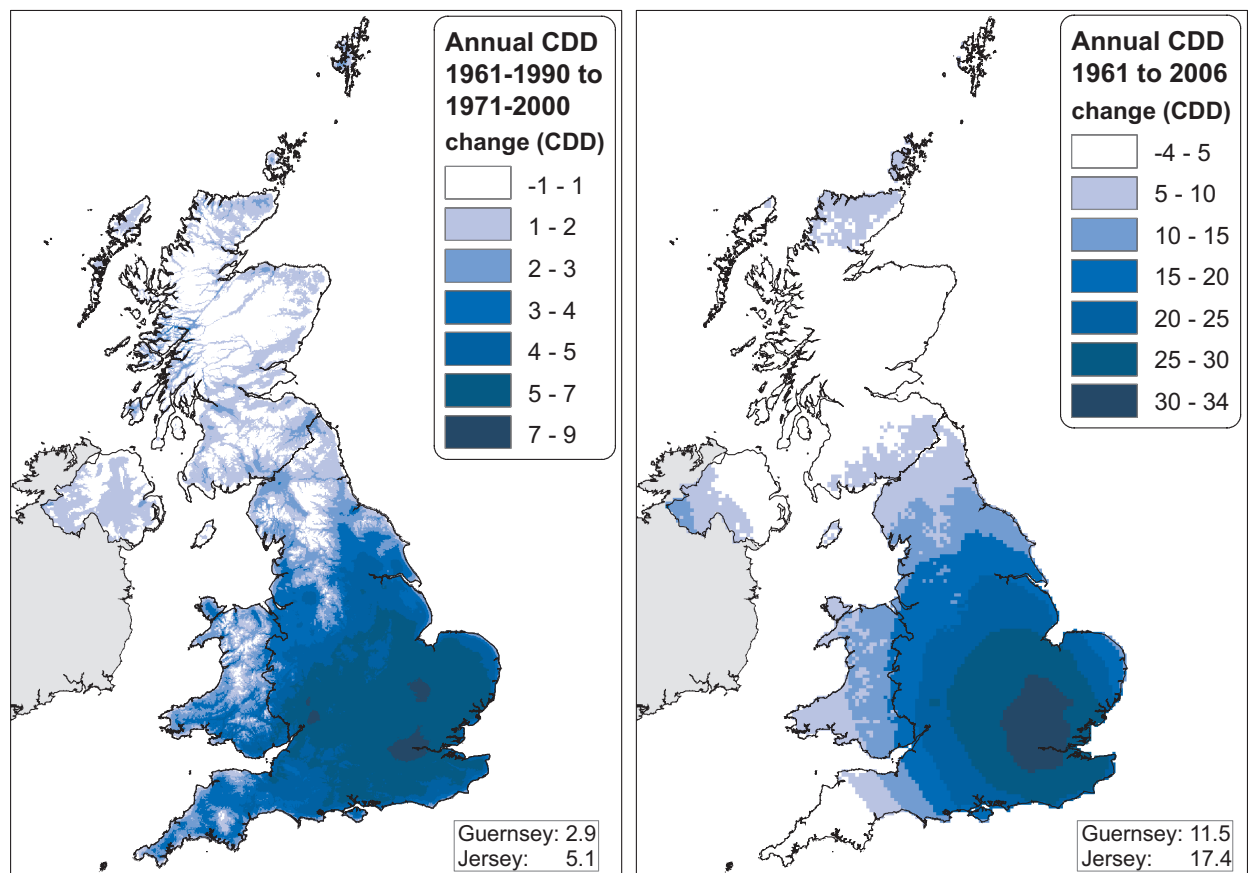


Figure 2.37: Change in annual cooling degree days (CDD) a) between 1961-1990 and 1971-2000; b) from 1961-2006 based on a linear trend

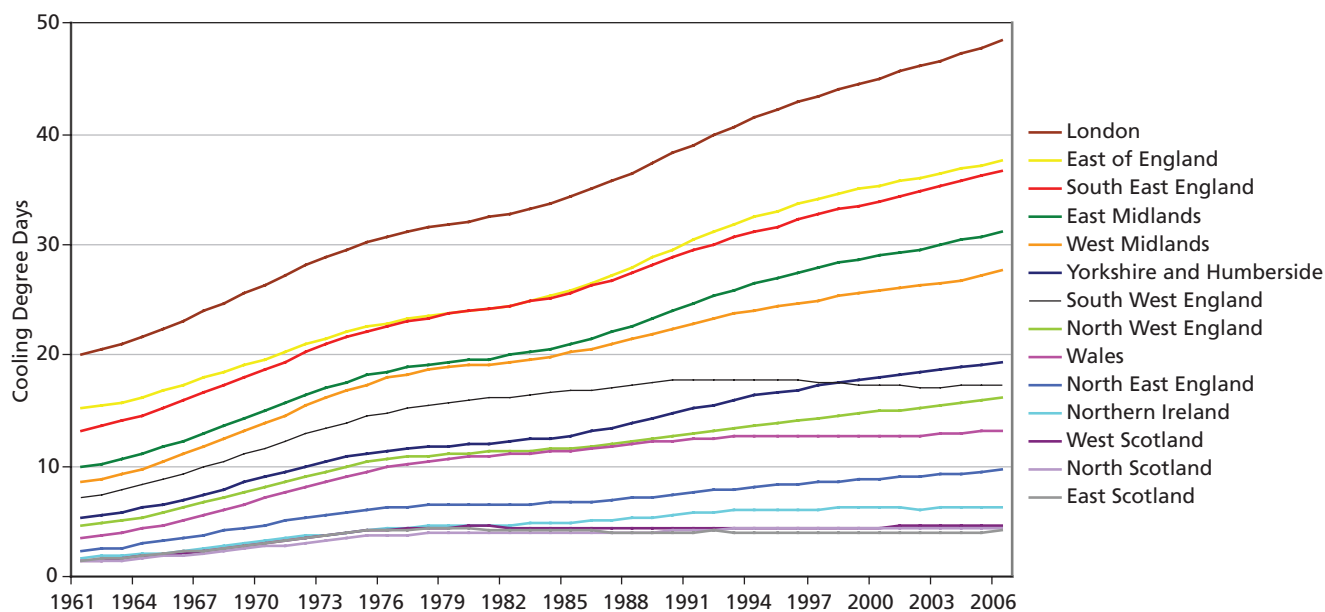


Figure 2.38: Filtered annual cooling degree days by area, 1961 – 2006. See Annex 2 for a definition of CDD.

Area	HDD	CDD
South West England	-16.9	11.6
South East England	-18.3	26.9
London	-18.1	32.3
Wales	-16.0	11.1
East of England	-17.9	26.5
West Midlands	-17.9	21.6
East Midlands	-17.9	24.4
Northern Ireland	-14.1	5.3
Yorkshire and Humberside	-16.5	16.2
North West England	-15.4	12.8
North East England	-15.8	8.0
West Scotland	-13.4	3.3
East Scotland	-13.0	2.5
North Scotland	-11.5	3.4

Table 2.9: Percentage change in annual heating degree days and absolute change in cooling degree days from 1961-2006 by area, based on a linear trend (bold type indicates significance of the trend at the 95% level)