

Maximum Temperature

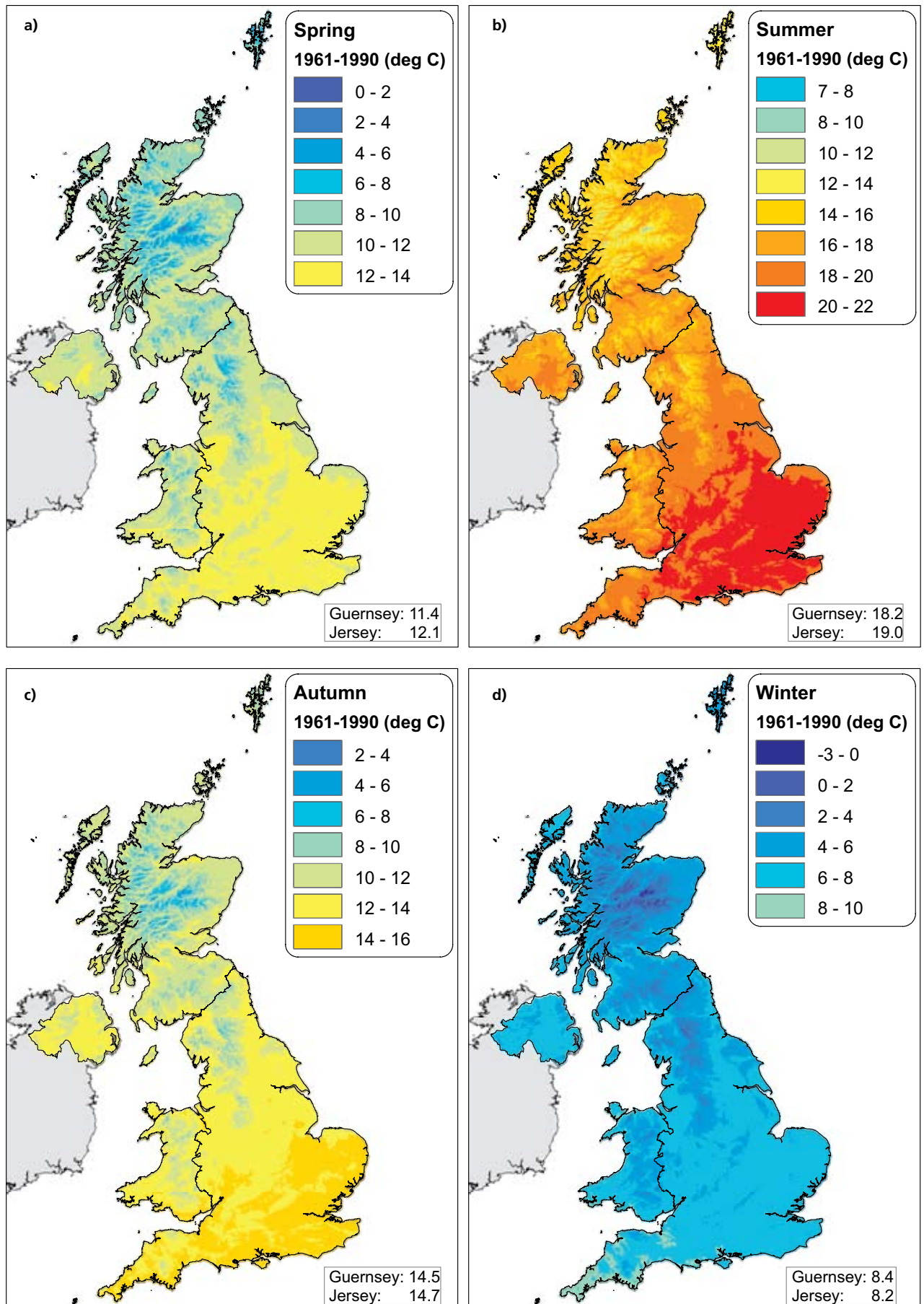


Figure 2.12: 1961-1990 average daily maximum temperature (°C) for a) spring, b) summer, c) autumn and d) winter

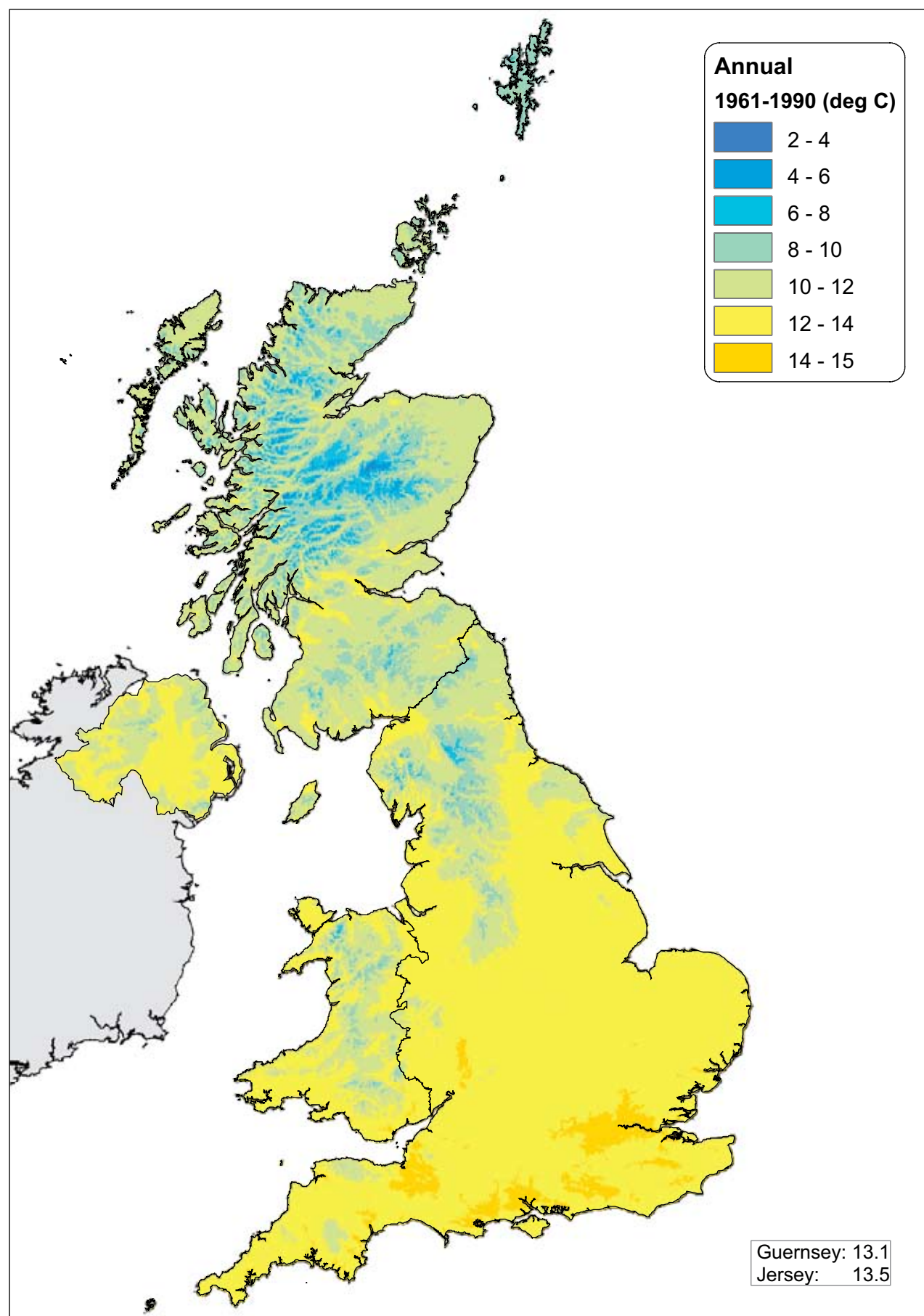


Figure 2.13: Annual average daily maximum temperature (°C) for 1961-1990

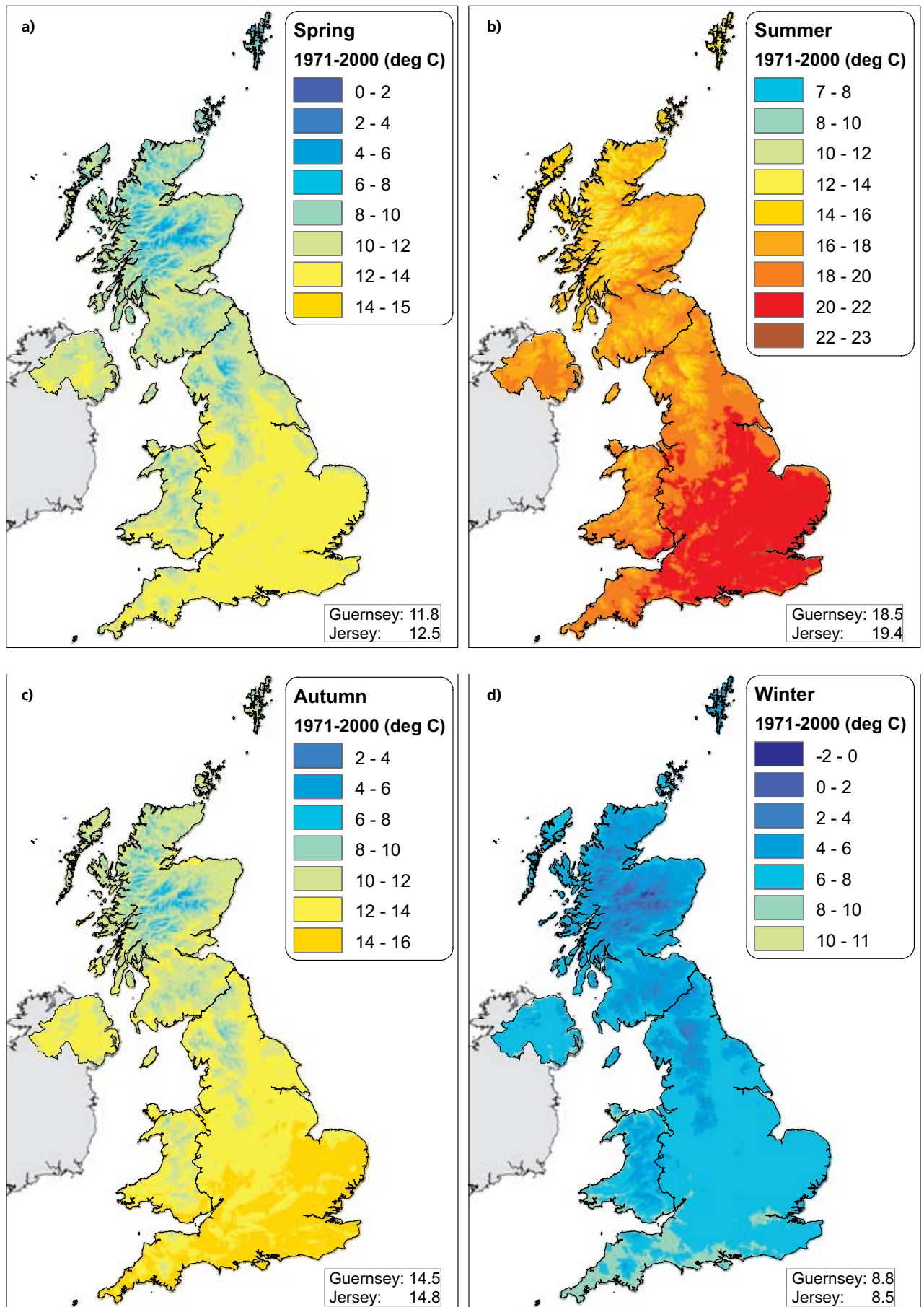


Figure 2.14: 1971-2000 average daily maximum temperature (°C) for a) spring, b) summer, c) autumn and d) winter

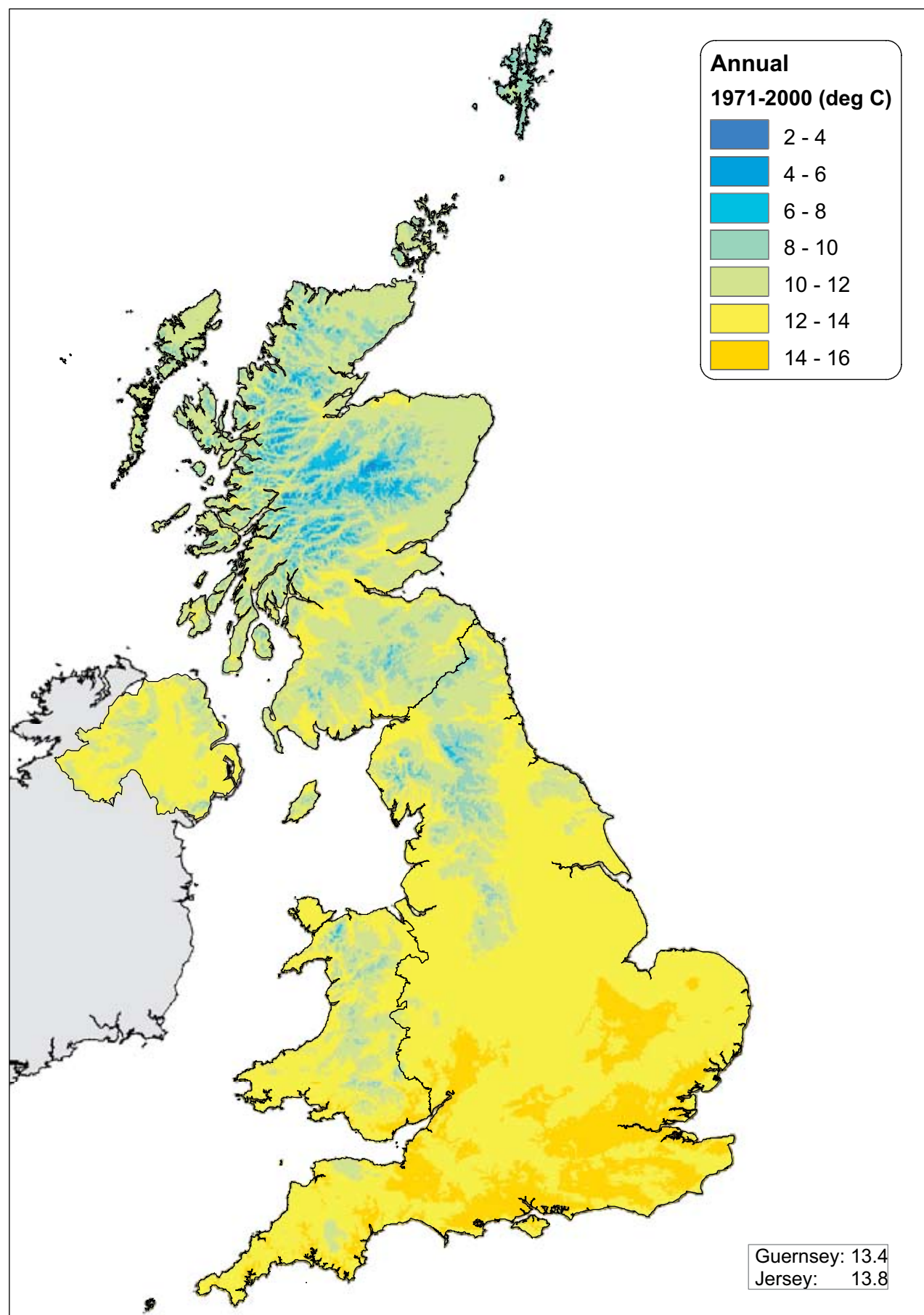


Figure 2.15: Annual average daily maximum temperature (°C) for 1971-2000

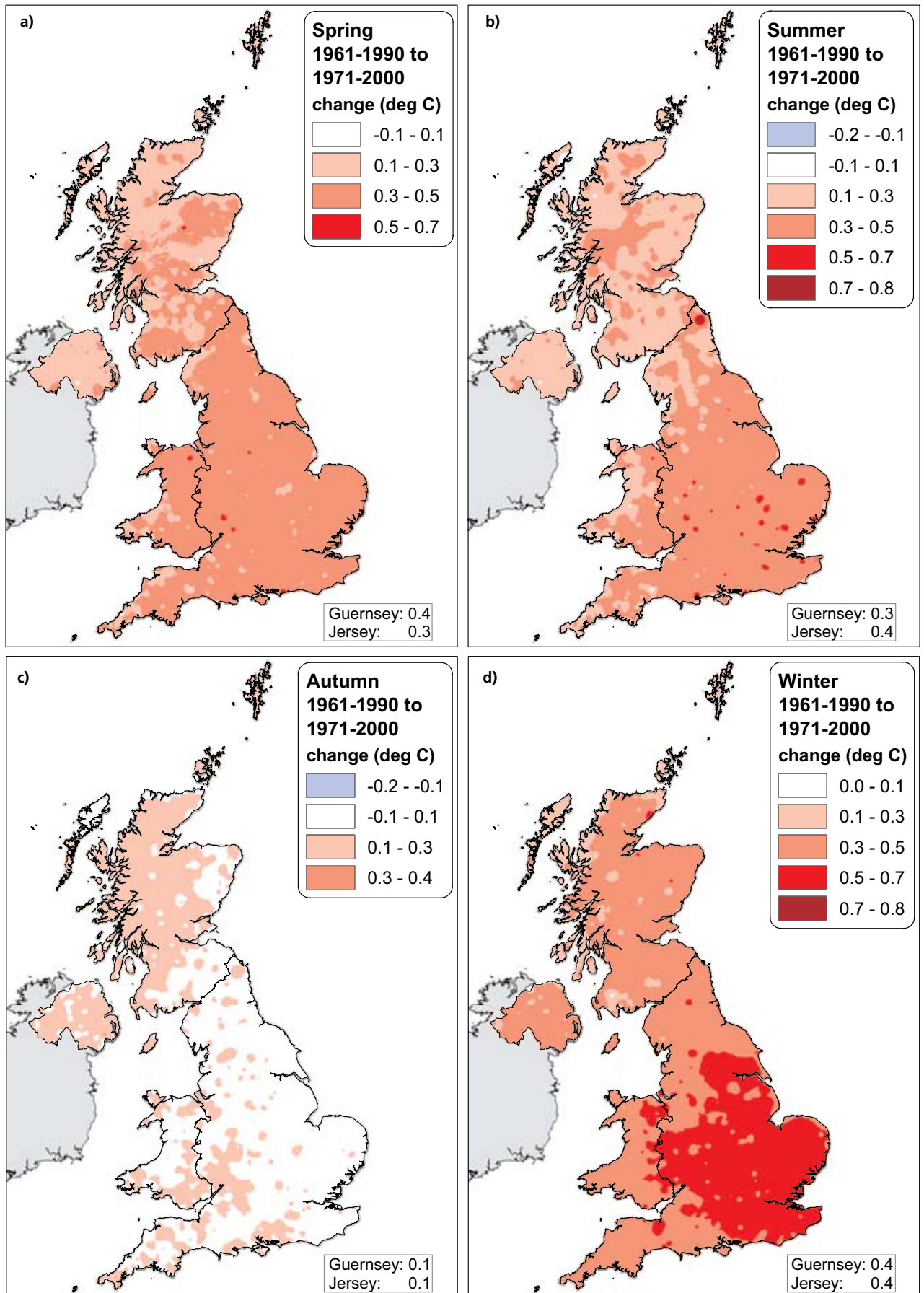


Figure 2.16: Change in daily average daily maximum temperature (°C) from 1961-1990 to 1971-2000 for a) spring, b) summer, c) autumn, d) winter

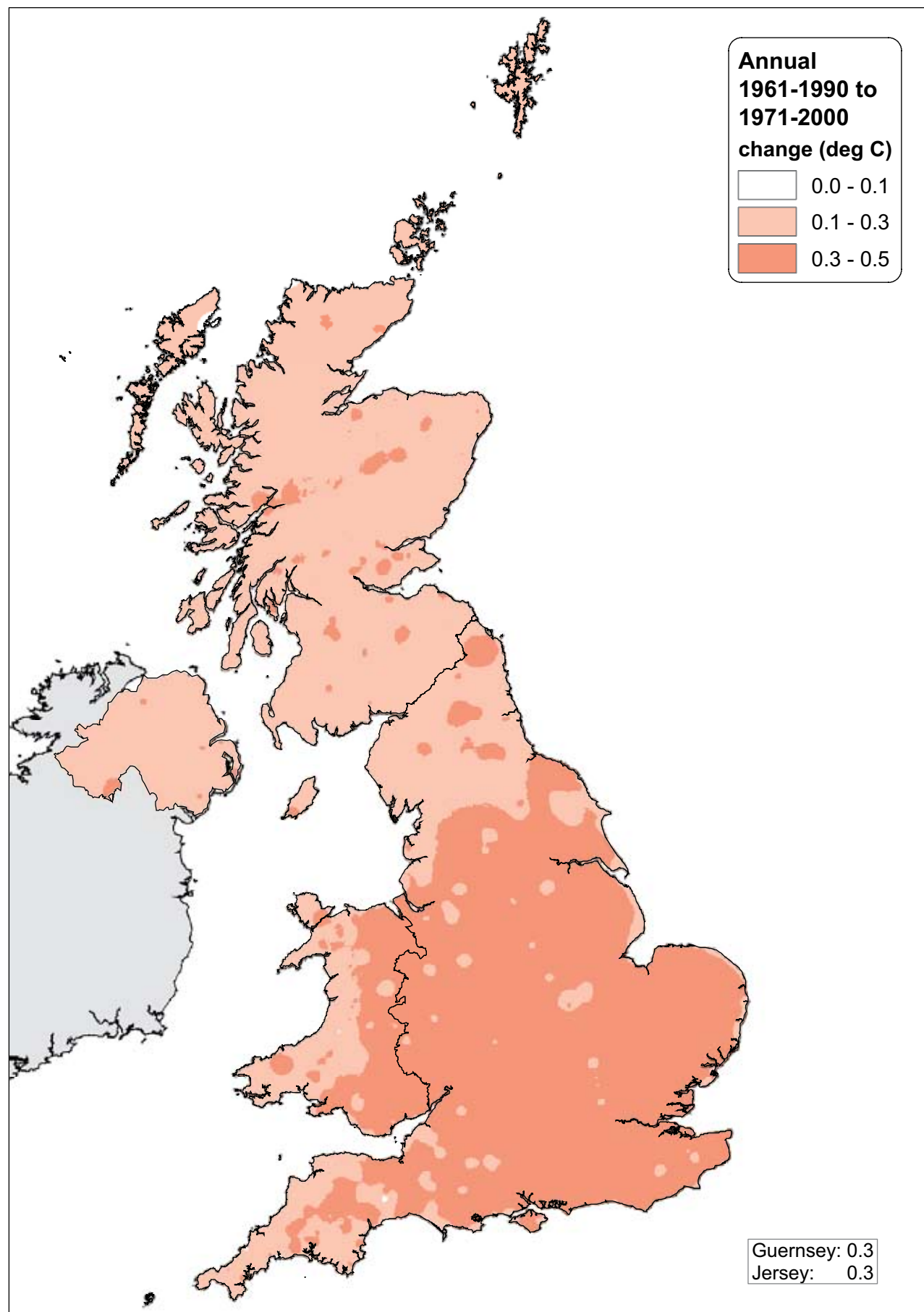


Figure 2.17: Change in annual average daily maximum temperature (°C) between 1961-1990 and 1971-2000

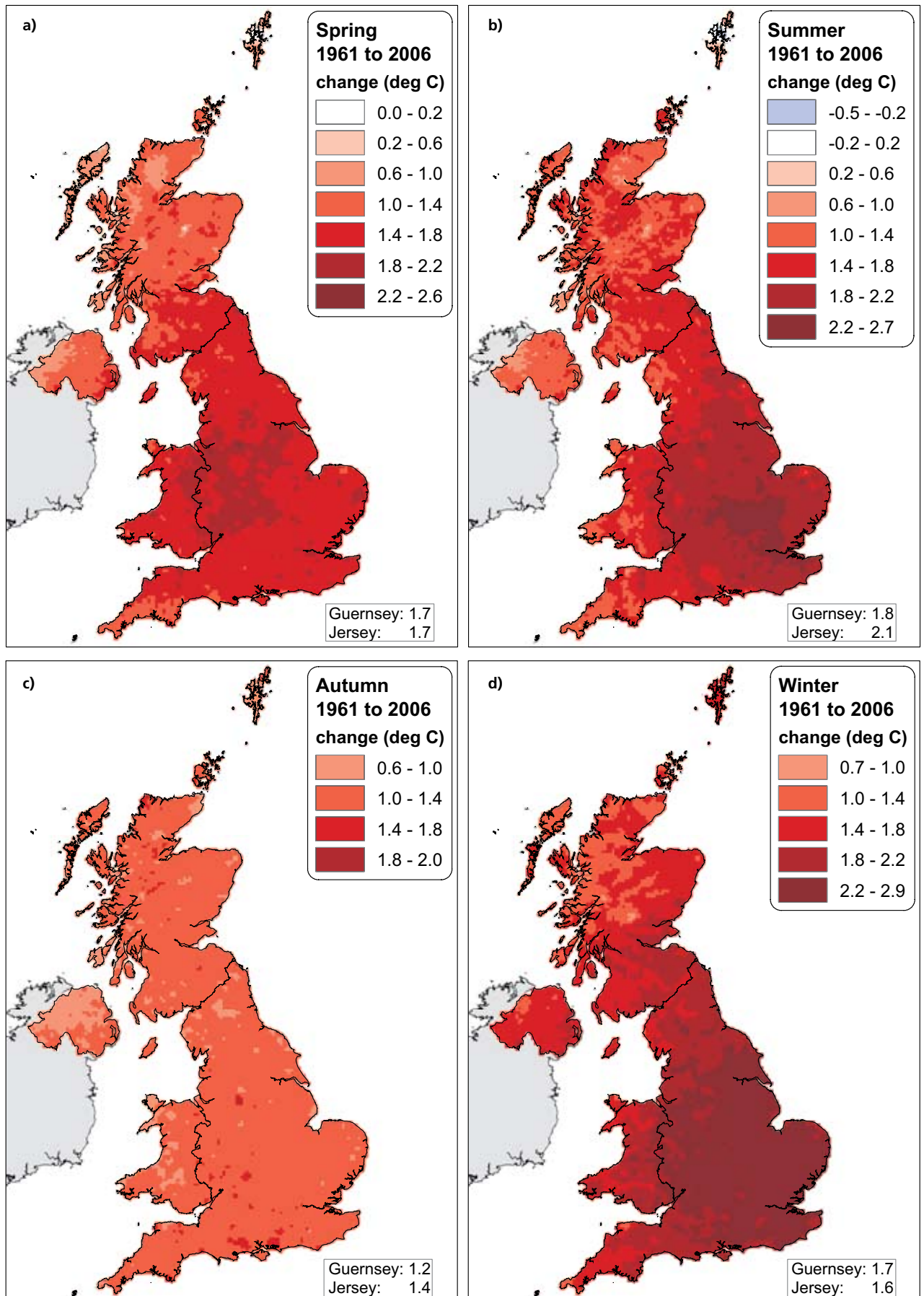


Figure 2.18: Change in average daily maximum temperature (°C) from 1961 to 2006 based on a linear trend for a) spring, b) summer, c) autumn, d) winter

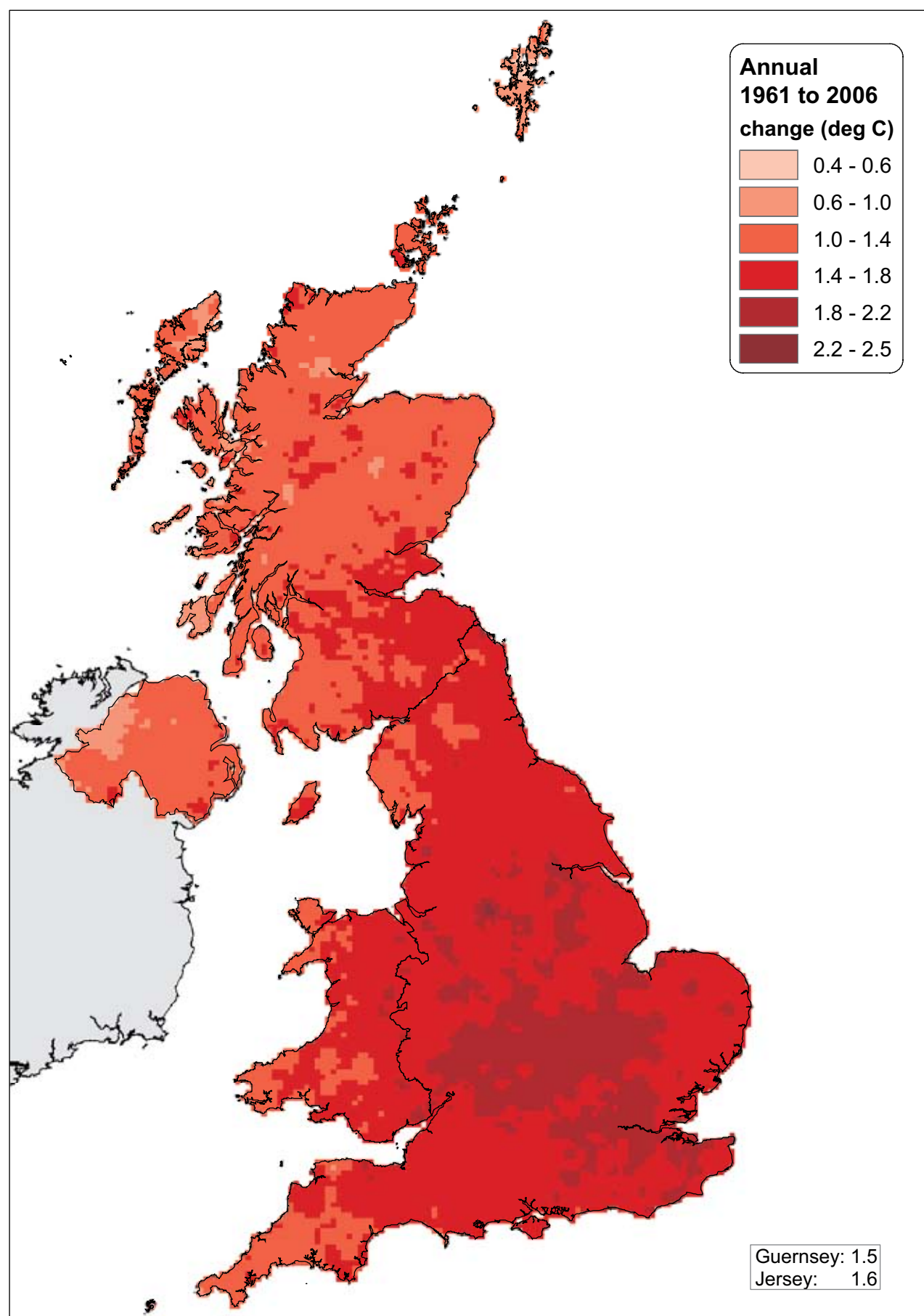
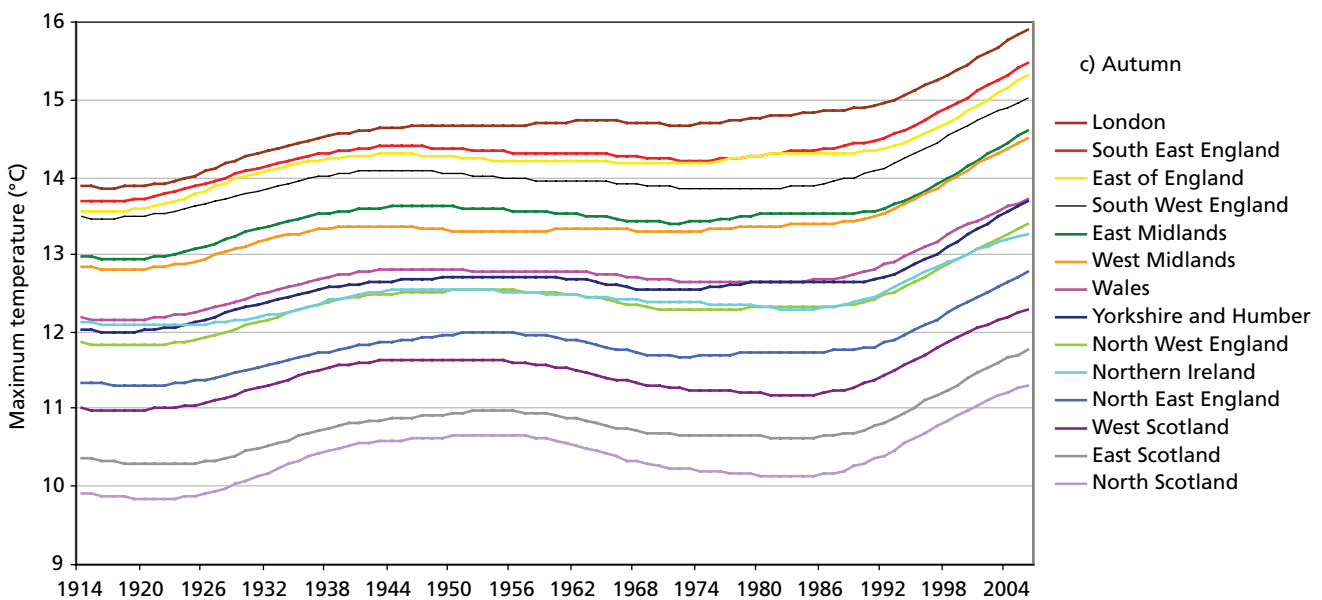
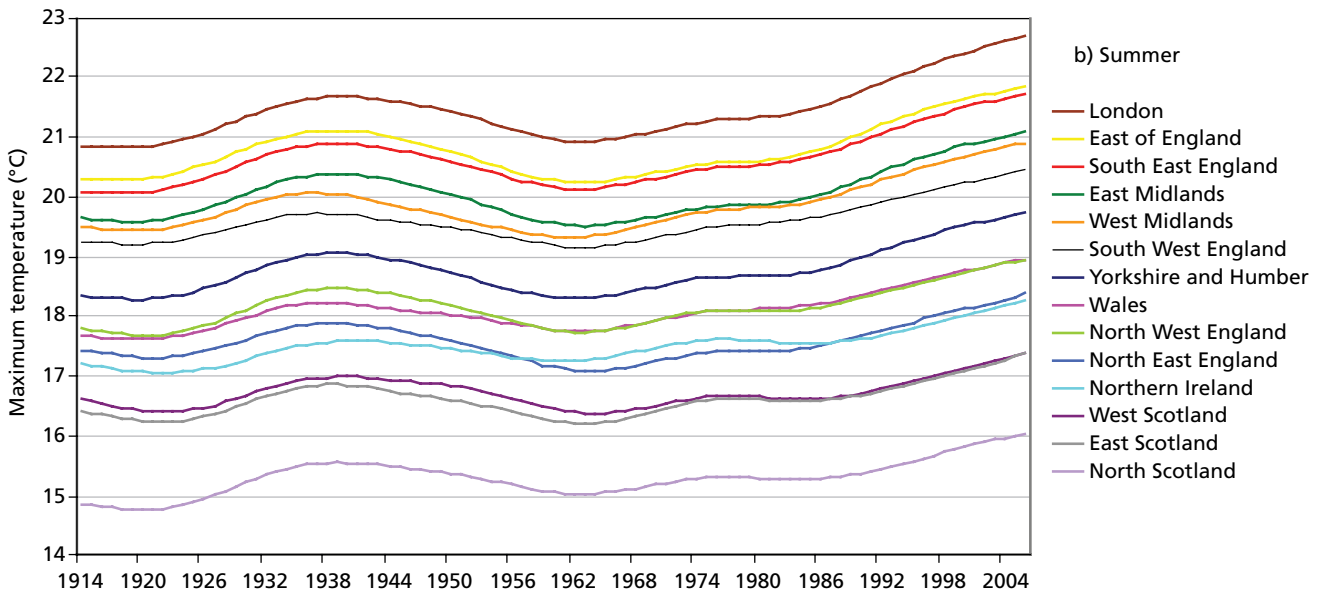
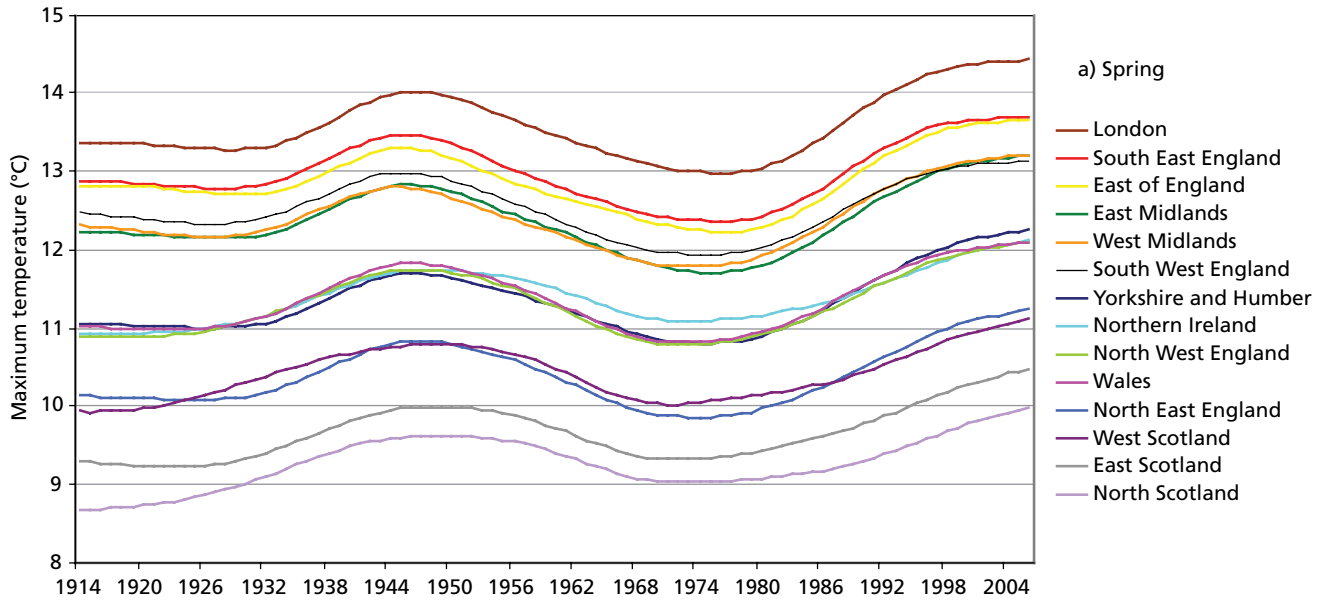


Figure 2.19: Change in annual average daily maximum temperature (°C) between 1961 and 2006 based on a linear trend



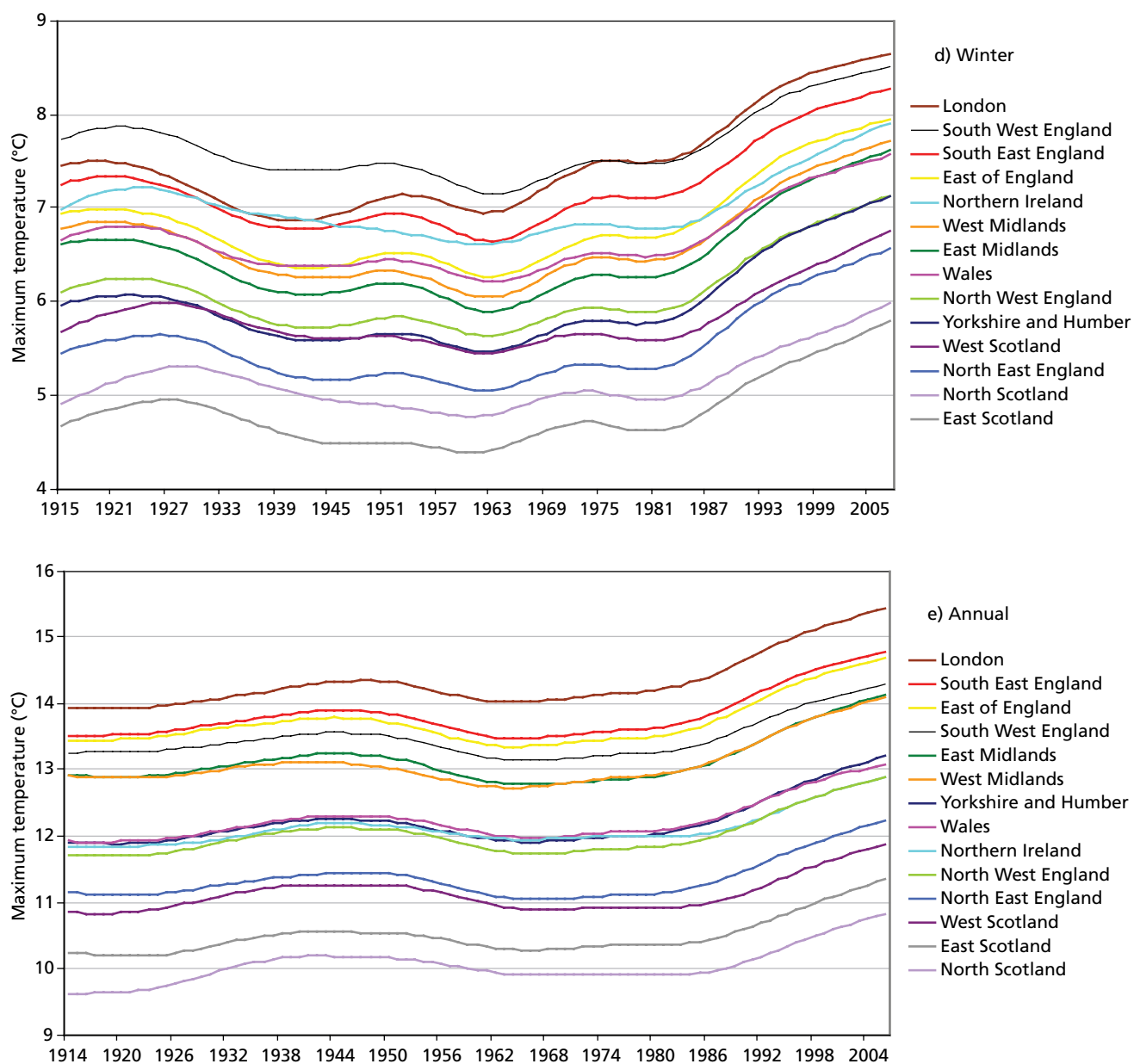


Figure 2.20: Filtered daily maximum temperature (°C) by area, 1914-2006 for a) spring, b) summer, c) autumn, d) winter, e) annual

Area	Spring	Summer	Autumn	Winter	Annual
South West England	0.21	0.80	0.89	0.58	0.59
South East England	0.31	1.03	1.12	0.94	0.81
London	0.58	1.17	1.50	1.32	1.11
Wales	0.56	0.92	0.99	0.68	0.76
East of England	0.33	0.87	1.10	0.93	0.76
West Midlands	0.44	0.94	1.09	0.77	0.77
East Midlands	0.41	0.81	0.98	0.83	0.71
Northern Ireland	0.68	0.82	0.72	0.48	0.65
Yorkshire and Humberside	0.68	0.85	1.07	0.93	0.84
North West England	0.59	0.67	0.95	0.77	0.71
North East England	0.53	0.44	0.88	0.79	0.62
West Scotland	0.49	0.36	0.63	0.57	0.48
East Scotland	0.71	0.57	0.85	0.73	0.68
North Scotland	0.67	0.70	0.76	0.57	0.65

Table 2.4: Change in daily maximum temperature (°C) from 1914 to 2006 by season and area, based on a linear trend (bold type indicates significance of the trend at the 95% level)

Area	Spring	Summer	Autumn	Winter	Annual
South West England	1.55	1.65	1.26	1.89	1.54
South East England	1.67	2.03	1.32	2.17	1.75
London	1.78	2.23	1.31	2.22	1.84
Wales	1.66	1.59	1.12	1.84	1.52
East of England	1.70	2.09	1.18	2.24	1.76
West Midlands	1.83	2.01	1.26	2.16	1.77
East Midlands	1.79	2.10	1.20	2.24	1.79
Northern Ireland	1.16	1.20	1.01	1.59	1.20
Yorkshire and Humberside	1.72	1.88	1.14	2.13	1.68
North West England	1.67	1.63	1.13	1.93	1.55
North East England	1.63	1.72	1.11	1.92	1.55
West Scotland	1.31	1.37	1.11	1.57	1.30
East Scotland	1.34	1.47	1.17	1.62	1.36
North Scotland	1.06	1.30	1.17	1.33	1.18

Table 2.5: Change in daily maximum temperature (°C) from 1961 to 2006 by season and area, based on a linear trend (bold type indicates significance of the trend at the 95% level)